

2008

FZ-Series



FZ1 / ABS

FZ1 Fazer / ABS

FZ6 S2

FZ6 Fazer S2 / ABS





A genuinely good idea never fails – which is why our hugely popular FZ-Series has grown to a whole family of machines, every one created to get the adrenaline pumping every day. That is the genius concept of the FZ range – engineering supersport performance and easy-going character into the same motorcycle for an irresistible ride, seven days a week. There is an FZ out there to suit your riding lifestyle – from streetbike to sports bike to sports tourer – check out the awesome R1-inspired FZ1 Fazer and FZ1, the high-spec FZ6 Fazer S2 and FZ6 S2, and the optional GT equipped versions, all but FZ6 S2 available with ABS. Yamaha FZ-Series – because Monday is every bit as exciting as the weekend.



FZ-Series

*Delivering
adrenaline,
every day*







FZ1 / ABS

***Serious attitude
backed up by
serious power***

The FZ1 was born for life on the street – taut, muscular, ready for anything. Its R1-based engine packs a mighty mid-range punch and that cast aluminium frame cuts its way through the curves like a supersport bike, so whatever's going down on the street you're always in charge. The FZ1 has got heart-pumping knockout performance and it's got serious attitude on top of that, with 'monolite' design that concentrates mass around the four-cylinder engine for a lean and mean look that's all about raw power. The Yamaha FZ1 – naked aggression in a motorcycle.





FZ1 ABS version depicted, undercowl as standard. The FZ1 is not fitted with undercowling



FZ1 Fazer / ABS

***All-out
performance,
all-round
versatility***

Leaning through the left-hander you can feel the FZ1 Fazer's chassis, suspension and tyres doing exactly what you tell them to do. What you're feeling is the superb man-machine interaction that's at the core of the FZ1 Fazer's R1-inspired supersport performance. Accelerating out of the turn you feel it again, because the R1-based engine is tuned for massive mid-range, the kind of power you use all the time. In fact you're enjoying yourself so much that the short ride you had planned turns into something a bit longer. No worries, the FZ1 Fazer's upper fairing keeps you happy on all-day trips and there's plenty of room for luggage when you decide this ride's going to last all weekend.









The FZ1 Fazer and FZ1 share the same supersport heart – an R1-based engine that's been fine-tuned for awe-inspiring real-world performance with refined cam profiles, intake/exhaust spec and fuel injection mapping. They share the same supersport soul too – a cast aluminium frame and swingarm with optimum stiffness balance that excel on every ride, plus a forward riding position that puts you in control for brilliantly agile steering. The all-round spec is completed by R1-type five-spoke wheels, 43 mm upside-down forks with independent damping for spot-on set-up and a three-way catalyser with with O₂ sensor for low (EU3) emissions. Both models are available with ABS.



FZ1 Fazer / FZ1

***Real-world
performance,
supersport heart
and soul***



FZ1 ABS version depicted.

FZ1 Fazer / ABS and FZ1 are not fitted as standard with undercowling





The FZ6 S2 cuts a dash on the street. Its audacious, forward-thrusting design demands attention. Its powerfully built chassis and 12,000 rpm four-cylinder engine are ready to spring into action with a stab of the starter button. This is a motorcycle that cuts straight to the chase, it's a stripped-down performance sculpture with high-end horsepower and seriously agile handling that's king of the street, whichever way you're looking at it. Pump it up, get on down, chill out, the FZ6 S2 is with you every step of the way.

FZ6 S2

***fire it up and let
action commence***







You don't do the same thing every day of your life, so why would you want a motorcycle that's only designed to do one thing? You need a motorcycle with a design brief as varied and diverse as your lifestyle. That's the FZ6 Fazer S2 – do your usual stuff Monday to Friday, then when you need to get away, no need to make plans, just strap on a kitbag and away you go, loving the high-revving horsepower, supersport quality handling and weather-beating upper fairing. The FZ6 Fazer S2 can do it all and do it with real supersport spirit, so every ride is a real buzz, any day of the week.

***FZ6 Fazer S2 /
ABS***

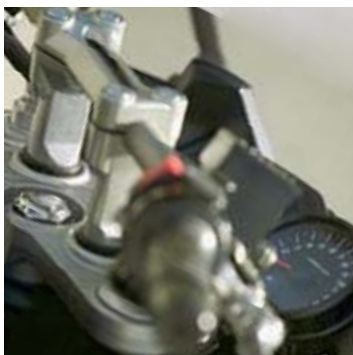
***Whatever you
want, whenever
you want***





***FZ6 S2 /
FZ6 Fazer S2***

***World Supersport
engineering for
the street***



That engine is pretty trick. It was developed in World Supersport racing which explains the high-rpm red line, four valves per cylinder, optimised fuel injection mapping and under-seat exhaust. But the FZ6 S2/FZ6 Fazer S2 hasn't just got the exhilarating top-end hit you crave, it's got great mid-range too and an EU3-spec catalyser. You will also love the forward riding position that gives you superb control, carving through corners, using the razor-sharp cast aluminium frame to the max. And both S2 models feature exclusive high-grade chassis mods: high-rigidity aluminium swingarm, monobloc front brake calipers, alumite-coated front forks and sporty upper cowling (FZ6 Fazer S2 only). FZ6 Fazer S2 is also available with ABS.







Maybe you won't want the GT kit when you buy your Fazer. Fair enough. Then one day you'll find your little weekend trips becoming big weekend trips, and then those long weekenders turn into unforgettable continental touring holidays that last a whole fortnight! That's when you may decide you need some grand turismo gear. We've got a range of GT accessories that will transform your FZ1 Fazer or FZ6 Fazer S2 into a full-on sport tourer. Choose from easy-on/easy-off side cases (FZ1 Fazer only), taller windscreens and full cowlings, all available separately and all created for added long-distance comfort and convenience.

GT accessories

*Because just
down the road
isn't always
enough*



*FZ1 Fazer and FZ6 Fazer S2 fitted with
genuine Yamaha accessories*

 **YAMAHA**
GENUINE
Parts & Accessories







FZ Lifestyle

*Take your FZ style
to the next level*

Brilliant design, genius engineering and renowned build quality are at the heart of every Yamaha FZ-Series motorcycle. And the same goes for our extensive range of official Yamaha accessories, riding apparel and lifestyle wear. If you want to fine tune your FZ for your individual riding needs, choose from fly screens, sub-cowlings, single-seat covers, roller protectors, various trick carbon-fibre bits and plenty more. We've also got a full selection of high-grade riding apparel, from sports kit to touring gear, and some super-stylish lifestyle wear that sets you apart as a rider who understands, an FZ rider. Find out more from your Yamaha dealer or check out www.yamaha-motor-co.uk/accessories_parts



*FZ6 S2 ABS and FZ1 Fazer fitted with genuine
Yamaha accessories*

 **YAMAHA**
GENUINE
Parts & Accessories







FZ1/ABS – Midnight Black (SMX)

FZ1 ABS version depicted. The FZ1 is not fitted as standard with undercowling



FZ1/ABS – Competition White (BWC1)



FZ1/ABS – Silver Metallic (SM1)



FZ1 Fazer/ABS – Graphite (DNMG)



FZ1 Fazer/ABS – Lava Red (DRMK)



FZ1 Fazer/ABS – Ocean Depth (DPBMU)

Technical specification



FZ1 / ABS – FZ1 Fazer / ABS

ENGINE

Type	Liquid-cooled 4-stroke, forward-inclined parallel 4-cylinder, DOHC
Displacement	998 cc
Bore and stroke	77.0 x 53.6 mm
Compression ratio	11.5:1
Max. power	110.3 kW (150 PS) @ 11,000 rpm
Max. torque	106.0 Nm (10.82 kg-m) @ 8,000 rpm
Carburettor/fuel supply	Fuel Injection
Lubrication	Wet sump
Clutch type	Wet, multiple-disc, coil-spring
Ignition	TCI
Starter system	Electric
Transmission	Constant mesh, 6-speed
Final transmission	Chain

CHASSIS

Frame	Die-cast aluminium, diamond shaped
Front suspension	Telescopic forks
Front wheel travel	130 mm
Rear suspension	Swingarm (link suspension)
Rear wheel travel	130 mm
Front brake	Dual discs, Ø 320 mm
Rear brake	Single disc, Ø 245 mm
Front tyre	120/70 ZR17 M/C (58W)
Rear tyre	190/50 ZR17 M/C (73W)

DIMENSIONS

Overall length	2,140 mm
Overall width	770 mm
Overall height	1,060 mm - 1,205 mm
Seat height	815 mm
Wheelbase	1,460 mm
Min. ground clearance	135 mm
Dry weight	194 kg / 201 kg - 199 kg / 205 kg
Fuel tank capacity	18 litres
Oil capacity	3.8 litres



FZ6 S2 – Midnight Black (SMX)



FZ6 S2 – Silver Metallic (SM1)



FZ6 S2 – Competition White (BWC1)



FZ6 Fazer S2/ABS – Midnight Black (SMX)



FZ6 Fazer S2/ABS – Silver Metallic (SM1)



FZ6 Fazer S2/ABS – Ocean Depth (DPBMU)

FZ6 S2 – FZ6 Fazer S2 / ABS

ENGINE

Type	Liquid-cooled 4-stroke, forward-inclined parallel 4-cylinder, DOHC
Displacement	600 cc
Bore and stroke	65.5 x 44.5 mm
Compression ratio	12.2:1
Max. power	72.0 kW (98 PS) @ 12,000 rpm
Max. torque	63.1 Nm (6.44 kg-m) @ 10,000 rpm
Carburettor/fuel supply	Fuel Injection
Lubrication	Wet sump
Clutch type	Wet, multiple-disc
Ignition	TCI
Starter system	Electric
Transmission	Constant mesh, 6-speed
Final transmission	Chain

CHASSIS

Frame	Die-cast aluminium, diamond shaped
Front suspension	Telescopic forks
Front wheel travel	130 mm
Rear suspension	Swingarm (monocross)
Rear wheel travel	130 mm
Front brake	Dual discs, Ø 298 mm
Rear brake	Single disc, Ø 245 mm
Front tyre	120/70ZR17M/C (58W)
Rear tyre	180/55ZR17M/C (73W)

DIMENSIONS

Overall length	2,095 mm
Overall width	755 mm – 750 mm
Overall height	1,085 mm – 1,210 mm
Seat height	795 mm
Wheelbase	1,440 mm
Min. ground clearance	145 mm
Dry weight	180 kg / 185 kg – 186 kg / 191 kg
Fuel tank capacity	19.4 litres
Oil capacity	3.4 litres



Not all models and/or colours as depicted are available.

Please contact your local Yamaha dealer to check availability of our models



FZ6/ABS –Silver Storm (BS4)



FZ6/ABS – Diamond Black (DNMB)



FZ6 Fazer/ABS –Silver Storm (BS4)



FZ6 Fazer/ABS – Diamond Black (DNMB)

FZ6 / ABS – FZ6 Fazer / ABS

ENGINE

Type	Liquid-cooled 4-stroke, forward-inclined parallel 4-cylinder, DOHC
Displacement	600 cc
Bore and stroke	65.5 x 44.5 mm
Compression ratio	12.2:1
Max. power	57.0 kW (78 PS) @ 11,500 rpm
Max. torque	51.6 Nm (5.27 kg-m) @ 10,000 rpm
Carburettor/fuel supply	Fuel Injection
Lubrication	Wet sump
Clutch type	Wet, multiple-disc
Ignition	TCI
Starter system	Electric
Transmission	Constant mesh, 6-speed
Final transmission	Chain

CHASSIS

Frame	Aluminium die-cast, diamond shaped
Front suspension	Telescopic forks
Front wheel travel	130 mm
Rear suspension	Swingarm (monocross)
Rear wheel travel	130 mm
Front brake	Double discs, Ø 298 mm
Rear brake	Single disc, Ø 245 mm
Front tyre	120/70ZR17M/C (58W)
Rear tyre	180/55ZR17M/C (73W)

DIMENSIONS

Overall length	2,095 mm
Overall width	755 mm – 750 mm
Overall height	1,085 mm – 1,215 mm
Seat height	795 mm
Wheelbase	1,440 mm
Min. ground clearance	145 mm
Dry weight	180 kg / 185 kg – 186 kg / 191 kg
Fuel tank capacity	19.4 litres
Oil capacity	3.4 litres

These models are not imported in the United Kingdom



Not for UK Market



FZ6 / ABS
FZ6 fozer / ABS

*Because every
rider is different*

