

XT660Z Tenere

XT660R

WR250R







Every new generation demands more than the last. More visceral thrills, more fun, more unforgettable memories and more life-affirming experiences. That's why Yamaha has assembled a range of adventure bikes like no other. We've resurrected the legendary Tenere name for a motorcycle that's truly capable of upholding the family's honour - the XT660Z Tenere. We've also introduced the radical WR250R and completed the range with the hugely respected XT660R. These are bikes for people who want those once in a lifetime moments every weekend.



***Because once
in a lifetime
isn't enough***

All images of the XT660Z Tenere depict the model fitted with optional aluminium side cases and skid plate





The XT660Z Tenere will take you wherever your imagination wants to go. The Tenere name earned its legendary status in some of the most gruelling rally raids and desert races on this planet. It stands for adventure, with the power and the poise to blaze trails all day long and the build quality demanded by true two-wheeled adventurers. The XT660Z Tenere is a road bike with global travelling potential that doesn't stop excelling when the tarmac runs out. Where is it going to take you? It's time to start imagining.

XT660Z Tenere

***Follow your
imagination***

All images of the XT660Z Tenere depict the model fitted with optional aluminium side cases and skid plate



XT660Z Tenere

***Feed your
wanderlust***

When you've got the wanderlust you need a motorcycle engineered to go the extra mile. That's the XT660Z Tenere – intelligently designed to take you wherever you want to go, with a low-slung 22-litre fuel tank that'll keep you going after others run dry, an easily manageable dry weight of 183 kg, an aluminium swingarm for reduced unsprung weight and better handling, vertically stacked twin headlights plus easy-to-replace body protector panels.



All images of the XT660Z Tenere depict the model fitted with optional aluminium side cases and skid plate





XT660Z Tenere

*The art of
adventure*

Yamaha's Art of Engineering philosophy means the perfection of every man-machine interface, so you can ride hard and ride long. The Tenere's fuel-injected 660 cc engine delivers superb torque while a tough steel chassis and plush suspension deliver brilliant control, so you're always in charge, whatever the road does beneath you. The styling is authentic rally raid and seriously resilient, the whole package built to take punishment, not pass it on.

And when your adventures demand more, there's a range of Tenere accessories, such as the aluminium side cases and top case as depicted, built to the same no-compromise standard.



For accessories information visit your local dealer or check www.yamaha-motor.co.uk/accessories_parts



 **YAMAHA**
GENUINE
Parts & Accessories





XT660R

***Adventure is
only a short
distance away***

The XT660R is the tough, high-spec, relentless all-rounder which adventurers from around the world really trust. Engineered tall, slim and light, it's built to explore and it's built to survive. The XT660R is a highly evolved member of the legendary been-there-got-the-T-shirt XT family that has been taking two-wheel explorers around the world for more than three decades. Designed to thrive in urban environments, the XT is always ready to introduce you to the unforgettable beauty of a long journey into the unknown.









The XT660R is a motorcycle that's never out of its depth. That compact liquid-cooled 660 cc engine delivers a punch and lets its intentions known through eye-grabbing high-level upswept end cans. The steel chassis and long-travel suspension are built ultra-robust to get the fun out of the roughest roads. And Yamaha's Art of Engineering philosophy ensures every component has been designed to enhance every mile you ride.

XT660R

Designed for life



WR250R

***There are only
52 weekends,
so use them***

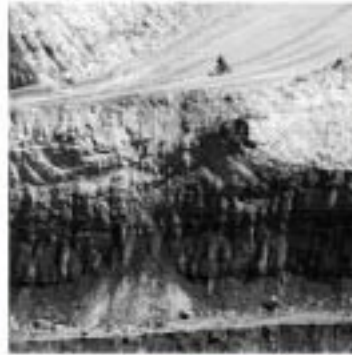
Saturday and Sunday, the days you get to do what you want, the days you live the rest of the week for. The brand new WR250R is the ultimate weekender. It's not another trail bike, it's much more than that, it's a blend of Yamaha's world-dominating off-road know-how and the no-compromise attitude of our R-Series supersport bikes. The WR250R uses technology transferred direct from our race bikes, so you can ride it to work Monday to Friday, head into the wilds for some serious dirt fun on Saturday, enter an enduro event on Sunday, then do it all again...



Professional rider performing under controlled riding conditions.







WR250R

**Built for the
extreme**

Our YZ-F motocrossers and WR-F enduro bikes are off-road legends, with a bunch of world titles to their name. The WR250R is based very closely on those motorcycles, with race-derived engine and lightweight aluminium chassis, so it's an off-road bike that a supersport rider would really understand. And like a true competitions machine, the WR250R is engineered to deliver the purest feel and feedback, so you've always got the confidence you need to take your riding technique to the next level. The WR250R – bred so you can do things you've never done before.



Professional rider performing under controlled riding conditions.







The WR250R features stunning over 10,000 rpm performance with its high-compression four-valve combustion chamber, high-lift cams, ceramic-plated cylinder, titanium intake valves, forged piston, downdraft straight intake fuel injection, low emission, torque-boosting EXUP exhaust and six-speed gearbox plus, of course, you get an electric start. The aluminium frame and swingarm are light and tough for quick turning and agile handling, with race-spec suspension including 46 mm upside down forks, aluminium triple clamps, wave-type discs and digital dash with enduro features. WR250R: ready to take you to the next level.

WR250R

*A race-bred
spec like you
wouldn't believe*





The whole point of an adventure is that you never know when it's going to end or where it's going to take you, which is why you need to be ready for anything. Our range of official adventure accessories was created so you can kit out your XT660Z Tenere, WR250R or XT660R, so you've got everything you need, whether you're heading to work or heading off around the world. Choose from aluminium side cases and skid plates, hand guards, carriers, luggage and more, plus a cool range of Yamaha clothing that does the job, whether you're off-road or on the town.



Get the full accessories lowdown at your local dealer or www.yamaha-motor.co.uk/accessories_parts



WR250R and XT660Z Tenere fitted with genuine Yamaha accessories.



Lifestyle

*Bring on the
adventure*



Technical specification



XT660Z Tenere

ENGINE

Type	Liquid-cooled, 4-stroke, 4-valve, single cylinder, SOHC
Displacement	660 cc
Bore and stroke	100.0 x 84.0 mm
Compression ratio	10.0:1
Max. power	35.6 kW (48.4 PS) @ 6,100 rpm
Max. torque	57.5 Nm (5.87 kg-m) @ 5,500 rpm
Carburettor/fuel supply	Fuel Injection
Lubrication	Dry sump
Clutch type	Wet, multiple-disc coil spring
Ignition	TCI
Starter system	Electric
Transmission	Constant mesh, 5-speed
Final transmission	Chain

CHASSIS

Frame	Steel tube, diamond shaped
Front suspension	Telescopic forks
Front wheel travel	210 mm
Rear suspension	Swingarm (monocross)
Rear wheel travel	200 mm
Front brake	Double disc, Ø 298 mm
Rear brake	Single disc, Ø 245 mm
Front tyre	90/90-21 M/C
Rear tyre	130/80-17 M/C

DIMENSIONS

Overall length	2,246 mm
Overall width	865 mm
Overall height	1,477 mm
Seat height	895 mm
Wheelbase	1,505 mm
Min. ground clearance	245 mm
Dry weight	183 kg
Fuel tank capacity	22 litres
Oil tank capacity	2.9 litres



XT660Z Tenere – Competition White (BWC1)



XT660Z Tenere – Midnight Black (SMX)



XT660Z Tenere – Desert Khaki (YNS5)

XT660R

ENGINE

Type	Liquid-cooled, 4-stroke, 4-valve, single cylinder, SOHC
Displacement	660 cc
Bore and stroke	100.0 x 84.0 mm
Compression ratio	10.0:1
Max. power	35.3 kW (48 PS) @ 6,000 rpm
Max. torque	60.0 Nm (6.1 kg-m) @ 5,250 rpm
Carburettor/fuel supply	Fuel Injection
Lubrication	Dry sump
Clutch type	Wet, multiple-disc coil spring
Ignition	TCI
Starter system	Electric
Transmission	Constant mesh, 5-speed
Final transmission	Chain

CHASSIS

Frame	Steel tube, diamond shaped
Front suspension	Telescopic forks
Front wheel travel	225 mm
Rear suspension	Swingarm (monocross)
Rear wheel travel	200 mm
Front brake	Single disc, Ø 298 mm
Rear brake	Single disc, Ø 245 mm
Front tyre	90/90-21 M/C
Rear tyre	130/80-17 M/C

DIMENSIONS

Overall length	2,240 mm
Overall width	845 mm
Overall height	1,230 mm
Seat height	865 mm
Wheelbase	1,505 mm
Min. ground clearance	210 mm
Dry weight	172 kg
Fuel tank capacity	15 litres
Oil tank capacity	2.9 litres



XT660R – Racing Blue (DPBSE)



XT660R – Yamaha Black (YB)



WR250R – Racing Blue (DPBSE)



WR250R – Sports White (PWS1)

WR250R

ENGINE

Type	Liquid-cooled, 4-stroke, DOHC, 4-valve, forward inclined single cylinder
Displacement	250 cc
Bore and stroke	77.0 x 53.6 mm
Compression ratio	11.8 : 1
Max. power	22.6 kW (30.7 PS) @ 10,000 rpm
Max. torque	23.7 Nm (2.42 kg-m) @ 8,000 rpm
Carburettor/fuel supply	Electronic Fuel Injection
Lubrication	Wet sump
Clutch type	Wet, multiple-disc coil spring
Ignition	TCI
Starter system	Electric
Transmission	Constant mesh, 6-speed
Final transmission	Chain

CHASSIS

Frame	Semi-double cradle
Front suspension	Telescopic forks
Front wheel travel	270 mm
Rear suspension	Swingarm (link suspension)
Rear wheel travel	270 mm
Front brake	Single disc, Ø 250 mm
Rear brake	Single disc, Ø 230 mm
Front tyre	80/100-21M/C 51P
Rear tyre	120/80-18M/C 62P

DIMENSIONS

Overall length	2,180 mm
Overall width	810 mm
Overall height	1,230 mm
Seat height	930 mm
Wheelbase	1,420 mm
Min. ground clearance	300 mm
Dry weight	126 kg
Fuel tank capacity	7.6 litres
Oil tank capacity	1.5 litres

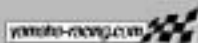


***For memories
that touch your heart***

Every Yamaha product is developed with the use of the latest technology and a passion to exceed expectations. They offer a superb interaction between you and your machine – an experience never to be forgotten.

Always wear a helmet, eye protection and protective clothing. Yamaha encourage you to ride safely and respect fellow riders and the environment. Images shown in this brochure depict professional riders performing under controlled conditions. Specifications and appearance of Yamaha products as shown here are subject to change without notice and may vary according to requirements and conditions. For further details, please consult your Yamaha dealer.

Yamaha Motor (UK) Ltd
Sopwith Drive, Brooklands
Weybridge, Surrey KT13 0UZ
Tel.: 01932 358000
Brochure hotline : 01932 358121
Brochure email :
brochure@yamaha-motor.co.uk
Website : www.yamaha-motor.co.uk



Yamaha highly recommend to you the use of genuine Yamaha accessories and clothing. Contact your local dealer or visit our website: www.yamaha-motor.co.uk/accessories_parts

Dealer:

Printed on chlorine-free paper.
MCO-RBADV-GB08